

# Belt Curves: Z-Turn Interroll Portec Belt Curve

**Z-TURN**

## > Small Inside Radius Curve

### Proven Interroll Portec Technology

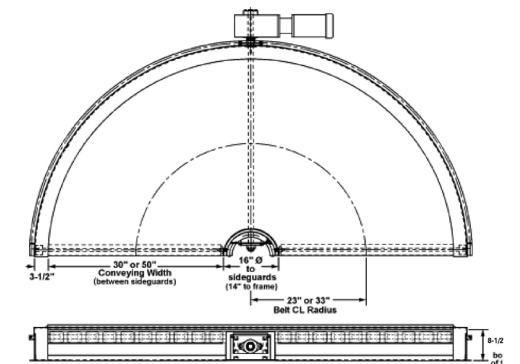
- Small inside radius for space-saving conveyor layout
- Cylindrical end rolls for outstanding product transfers
- Bi-directional operation
- Positive drive belt system means no end roll slip
- Low belt tension for long component life
- Custom designed for your specific application
- Low noise operation
- Rugged steel construction - no shortcuts or inferior materials
- Simplified maintenance enhancements



**A compact, quiet and reliable 180 degree belt power curve.**

## Technical Specifications

Sprocket size	8ZT30	8ZT50
<b>General Technical Data</b>		
Max Load Capacity	40 lbs/ft	40 lbs/ft
Max Conveyor Load	240 lbs	350 lbs
Conveyor speed at CL	0 - 170 fpm	0 - 170 FPM
Ambient temperature	5° - 176° F	5° - 176° F
<b>Drive Data</b>		
Rated voltage	400V / 50HZ / 3PH 460V / 60HZ / 3PH 110V / 220V / 60HZ / 1PH	400V / 50HZ / 3PH 460V / 60HZ / 3PH 110V / 220V / 60HZ / 1PH
Power	.5HP - 2HP	.5HP - 5HP
Motor Type	Gear Motor	Gear Motor
Drive Mount	Shaft Mounted	Shaft Mounted
End Roll Diameter	3 in	3 in
<b>Materials</b>		
Belt Material	Flexam EF 10/2 0 +A22 Black AS FR	Flexam EF 10/2 0 +A22 Black AS FR
Construction	12 gauge / 2.5mm	12 gauge / 2.5mm
Shaft Size	1-7/16" 35mm	
Drive Chain	Tsubaki #50 Sidebow	Tsubaki #50 Sidebow
Finish	RAL DTM	RAL DTM
Bearing	Peer MHS	Peer MHS
<b>Dimensions</b>		
Frame Height	8.5 in / 216mm	8.5 in / 216mm
Angle	180 Degrees	180 Degrees
Inner Radius (IR)	8"	8"
LW Clearance (BSG)	30"	50"
Min TOB Height	8.5 in / 216mm	12 in / 305mm
Side Guards	0" - 12"	0" - 12"
<b>Options</b>		
Underguarding	Expanded Metal Solid Steel Plastic Mesh	Expanded Metal Solid Steel Plastic Mesh
Supports	2" Square tubing 3" Square tubing H/S Supports Floor Blocks Ceiling Hanger	2" Square tubing 3" Square tubing H/S Supports Floor Blocks Ceiling Hanger
<b>Drive Mount Styles</b>		
Drip Pan	Standard Standard w/ Drain Plug	Standard Standard w/ Drain Plug



## > Positive Drive Belt System

The conveyor belt is positively driven by a shaft mounted sprocket engaging a precision sidebow chain which is attached directly to the outside edge of the belt. This positive drive system is unaffected by changes in loading, tension, temperature, humidity, and foreign material on the belt. The positive drive belt system ensures continuous, reliable operation even in harsh and difficult environments with minimal maintenance.